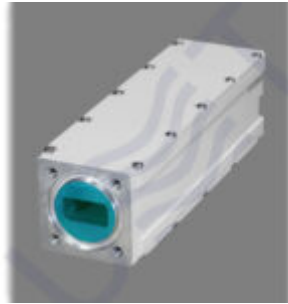


## LNB PLL DUAL LO: 9.75 + 10.60



Ku-band LNB PLL dual LO 9.75 10.6 is Low Noise Block Down Converter with dual local oscillator 9.75 GHz and 10.6 GHz and dual 75 Ohm F-type output. LO instability:  $\pm 10$  kHz, Gain: 55 dB, Noise figure: 0.8 dB, Output power P1dB: +6 dBm.

Ku-band LNB PLL dual LO 9.75 10.6 is Low Noise Block Down Converter which is designed for RF signals gaining and transforming from Ku-band to L-band (intermediate frequencies). The Ku-band LNB PLL dual LO 9.75 10.6 has a waterproof case. Ku-band LNB PLL dual LO 9.75 10.6 could be mounted in close proximity to antenna. Ku-band LNB PLL dual LO 9.75 10.6 has input flange PBR120 and could be used with regular RRL or receiving antennas.

### KEY FEATURES:

- Dual independent output (**LB** and **HB**)
- Flange PBR120 input
- Output power P1dB +6 dBm
- Input frequencies:
  - LB:** 10.7 – 11.7 GHz, **HB:** 11.7 – 12.75 GHz
- Output frequencies:
  - LB:** 950 – 1950 MHz, **HB:** 1100 – 2150 MHz
- Min. gain: 55 dB typ.
- LO stability (over temp.):  $\pm 10$  kHz
- Operating temp.: -40 ... +60
- Oscillator type: PLL

**Input parameters:**

<b>Input Frequency range</b>	<b>LB:</b> 10.7-11.7 GHz; <b>HB:</b> 11.7-12.75 GHz
<b>Input level, max</b>	-49 dBm
<b>Input VSWR, max</b>	2
<b>Input interface</b>	Waveguide WR75, Flange PBR120

**Local Oscillator:**

<b>LO frequency</b>	<b>LB:</b> 9.75 GHz; <b>HB:</b> 10.6 GHz
<b>LO Phase noise:</b>	
<b>@1 kHz</b>	-73 dBc/Hz
<b>@10 kHz</b>	-83 dBc/Hz
<b>@100 kHz</b>	-95 dBc/Hz
<b>LO instability</b>	± 10 kHz

**Output parameters:**

<b>Output frequency range</b>	<b>LB:</b> 950-1950 MHz; <b>HB:</b> 1100-2150 MHz
<b>Output Power @P1dB</b>	+6 dBm
<b>Gain, min</b>	55 dB
<b>Output interface</b>	F-type female
<b>Output impedance</b>	75 Ohm
<b>Output VSWR, max</b>	2

**Frequency Response:**

<b>Flatness over Full Band</b>	±2 dB
--------------------------------	-------

<b>Flatness over 27MHz Band</b>	±0.75 dB
<b>Spurious:</b>	
<b>Noise Figure (@+25 )</b>	0.8 dB max
<b>LO leakage, max</b>	-50 dBm
<b>Image rejection, min</b>	50 dBc
<b>Power supply:</b>	
<b>Input voltage</b>	13 – 18 VDC, nominal 18 VDC
<b>Power consumption, max</b>	3.9 W
<b>Environmental:</b>	
<b>Operating temperature</b>	-40 to +60 (-40 to +140 )
<b>Storage temperature</b>	-40 to +80 (-40 to +176 )
<b>Operating humidity</b>	0% – 95%
<b>Mechanical:</b>	
<b>Dimensions (W x H x D)</b>	40x42x169.5 mm
<b>Weight</b>	0.4 kg

*Taking into consideration that we (UMT LLC) are developer and system integrator, also do not stop on our technical growth and improvement, know that view of all our devices and equipment including their technical parameters may be different from pictures presented on website and parameters*

*listed on each device webpage.*

**Note!** All details customer has to confirm in advance during ordering and before payment. Those parameters that were not specified and / or were not agreed while ordering will be implemented as basic at the discretion of the manufacturer. Each our customer has 1.5 year warranty and 7 year aftersales support for whole range of our products.