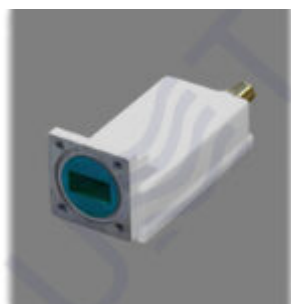


LNB DRO LO 11.30



Ku-band LNB DRO LO 11.30 is Low Noise Block Down Converter with single LO 11.30 GHz and single 75 Ohm F-type output. LO instability: ± 2 MHz, Gain: 58 dB, Noise figure: 0.9 dB, Output power P1dB: +3 dBm.

Input parameters:	
Input Frequency range	12.25 – 13.25 GHz
Input level, max	-53 dBm
Input VSWR, max	2.2
Input interface	Waveguide WR75, Flange PBR120
Local Oscillator:	
LO frequency	11.30 GHz
LO Phase noise:	
@1 kHz	-70 dBc/Hz
@10 kHz	-85 dBc/Hz
@100 kHz	-95 dBc/Hz
LO instability	± 2 MHz

Output parameters:	
Output frequency range	950 – 1950 MHz
Output Power @P1dB	+5 dBm
Gain, min	58 dB
Output interface	F-type female
Output impedance	75 Ohm
Output VSWR, max	2
Frequency Response:	
Flatness over Full Band	±2 dB
Flatness over 40MHz Band	±0.75 dB
Spurious:	
Noise Figure (@+25)	0.9 dB max
LO leakage, max	-50 dBm
Image rejection, min	60 dB
Power supply:	
Input voltage	12 VDC – 24 VDC, nominal 18 VDC
Power consumption, max	2 W
Environmental:	
Operating temperature	-30 to +60 (-22 to +140)
Storage temperature	-40 to +80 (-40 to +176)
Operating humidity	0% – 95%

Mechanical:	
Dimensions (W x H x D)	45x42x105 mm
Weight	0.2 kg

Taking into consideration that we (UMT LLC) are developer and system integrator, also do not stop on our technical growth and improvement, know that view of all our devices and equipment including their technical parameters may be different from pictures presented on website and parameters listed on each device webpage.

Note! All details customer has to confirm in advance during ordering and before payment. Those parameters that were not specified and / or were not agreed while ordering will be implemented as basic at the discretion of the manufacturer. Each our customer has 1.5 year warranty and 7 year aftersales support for whole range of our products.